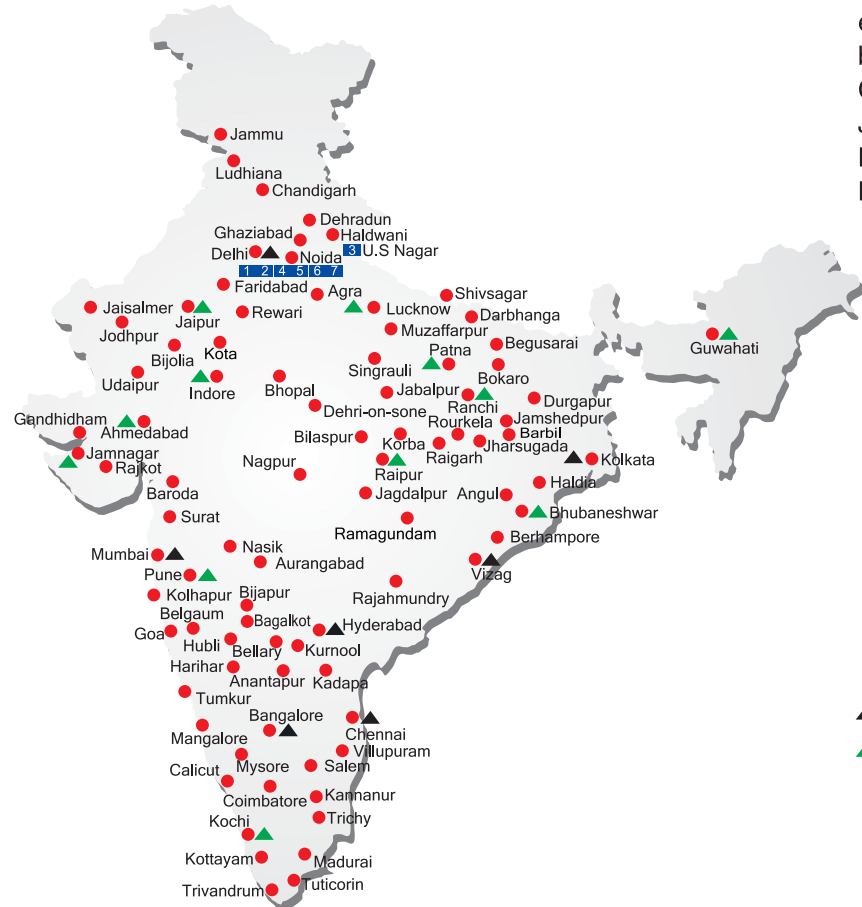


ACE

ALL INDIA NETWORK



SPARE PARTS & SERVICE

ACE has all India Sales and Service network operating out of all the major cities. These outlets are fully equipped to provide genuine spare parts and services by company trained engineers. These outlets are further supported by company officials based at Delhi, Mumbai, Chennai, Kolkata, Ahmedabad, Surat, Pune, Jaipur, Chandigarh, Ranchi, Raipur, Indore, Bhubneshwar, Lucknow, Jamnagar, Hyderabad, Bangalore, Guwahati, Patna, Vizag & Cochin.

CUSTOMER CARE

TOLL FREE No
1800 1800 004

- WORKS
- ▲ REGIONAL OFFICES
- ▲ AREA OFFICES
- SALES AND SERVICE DEALERS

MARKETING H.Q.

4th Floor, Pinnacle, Suraj Kund, NCR-121009,
Ph. : 0129-4550000 (100 Lines)
E-mail: marketing@ace-cranes.com

REGISTERED OFFICE

Dudhola Link Road, Dudhola, Palwal-121102, Haryana
Ph.: +91-1275-280111 , Fax: +91-1275-280133
CIN : L74899HR1995PLC053860

MUMBAI OFFICE

31, "Kalpataru Court", Chembur, Mumbai - 74
Ph.: +91-22-25206846, 25207070, Telefax: 25207071
E-mail: acemumbai@ace-cranes.com

KOLKATA OFFICE

"Forma Towers" 84-A, Second Floor, AJC Bose Road,
Kolkata - 14, Ph.: +91-33-65012050
E-mail: acekolkata@ace-cranes.com

CHENNAI OFFICE

1st Floor, "Alsa Regency", 165, Eldams Road,
Alwar Pet, Chennai - 18
Ph.: +91-44-24314253, Telefax: 24314252
E-mail: acechennai@ace-cranes.com



ACE

Action Construction Equipment Ltd.

Contact:



ACE reserves the right to alter any specifications without prior notice. Dimensions, weights & capacities mentioned herein are variable by ± 5%. Accessories if shown are not part of the Standard Equipment.



www.ace-cranes.com

Rhino90C

Hydraulic Mobile Crane

Rough terrain and rugged articulated pick n move crane

ACE INDIA'S NO. 1
MOBILE & TOWER CRANE CO.



Nothing beats an ACE

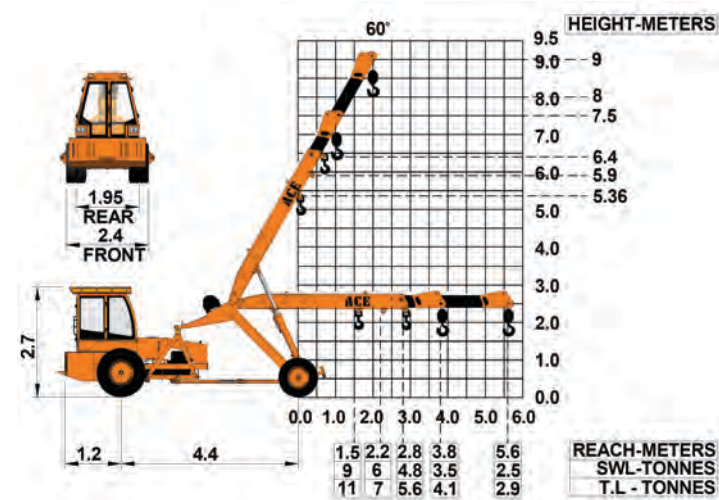


Specifications

Rhino 90 C

LIFTING CAPACITY (Free on wheels)	9 Tonnes - SWL 11 Tonnes - TL
ENGINE	Simpson's S433 (I) F1 (CEV BS-III), 4 cylinder, water cooled diesel engine OR suitable equivalent engine
Rated Power	48 BHP (36KW) at 2200 RPM
TRANSMISSION	Sliding mesh with 6 forward and 2 reverse speeds and high low range selector.
Clutch	Single, dry friction, clutch plate.
Top Speed	29 KMPH without load.
HYDRAULIC SYSTEM	<ul style="list-style-type: none"> ● Gear/Intra vane type main pump. ● Four spool control valve. ● Suction line has 100 mesh size strainer while return line is fitted with 25 micron full flow filter. ● Two double acting lift cylinders, two double acting steering cylinders and one double acting extension cylinder.
BRAKES	Pneumatically assisted hydraulic brakes. Front and rear brakes are actuated through a single pedal. Parking brake is Provided.
STEERING	Hydraulically operated with 55° articulation on either side and turning radius of 5.5 Mtrs. (approx) on outer rear wheels.
ELECTRICAL SYSTEM	12V. Negative earth with 35 Amp. alternator and 75 Amp hr. battery.
TELESCOPIC BOOM	Two part boom with hydraulically operated extension of 1800 mm stroke.
Telescoping Time	10 Seconds.
BOOM LUFFING	
Range	-5° to +60°
Time	20 Seconds.
HOIST	Winch is driven by hydraulic motor employing 4 falls of 13 mm dia rope.
Hoist Speed	50 Mtrs./Min. (Line speed)
TYRES	
Front	10.00 x 20 - 16PR (4 Nos.)
Rear	13.00 x 24 - 12PR (2 Nos.)
FLUID CAPACITIES	
Air Cleaner	0.75 Ltrs.
Engine	8.00 Ltrs.
Fuel Tank	45.00 Ltrs.
Hydraulic Tank	100.00 Ltrs.
Transmission	37.00 Ltrs.

STANDARD EQUIPMENT	<ul style="list-style-type: none"> ● ROPS fully enclosed wide view cabin. ● Front tyre protector. ● Front and rear work lights. ● Reflectors. ● Tool kit. ● Gauges :- a) Water Temperature. b) Engine oil pressure. c) RPM meter cum hour recorder
SAFETY	<ul style="list-style-type: none"> ● Audio overload indication. ● Hose failure protection. ● Audio over hoisting indication. ● Safety brakes on hoist. ● Cylinder guards.
OPTIONAL EQUIPMENT	<ul style="list-style-type: none"> ● Fly jib. ● Steering wheel. ● Slotted boom. ● Spark arrester. ● Over hoisting hydraulic cut off. ● Safe load indicator / LMI.
VARIANT MODELS	<ul style="list-style-type: none"> ● Rhino 90 (2300mm extension stroke) ● Rhino 90 T (without winch).
OPERATING WEIGHT	7750 kgs.



1 CONTROL PANEL
Well laid out and ergonomically placed controls and instrument cluster ensure ease of operation.



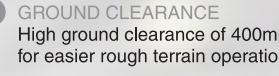
2 LIFTING HEIGHT
Higher lifting height of 9 mtrs.



3 TRAVEL SPEED
Travel speed of 29 kmph provides faster intersite movements.



4 ROPS CABIN
Wide view ROPS cabin with curved windscreen for better visibility.



5 GROUND CLEARANCE
High ground clearance of 400mm for easier rough terrain operation.



7 LIFTING CAPACITY
Higher lifting capacity of 9 Tonne SWL/ 11 Tonne TL.



8 FULL LENGTH CHASSIS
Provides better support to the power train leading to increased stability.



9 TURNING RADIUS
Lower turning radius of 5.5 mtrs. facilitates better maneuverability and movement in confined spaces.



10 MAIN FRAME
Heavy duty & robust construction.



ACE advantages